

QJH系列高压球芯截止阀

QJH Series High Pressure Ball Valve

其它系列

型号说明 Model Code



QJ H -- * *

1 2 3 4

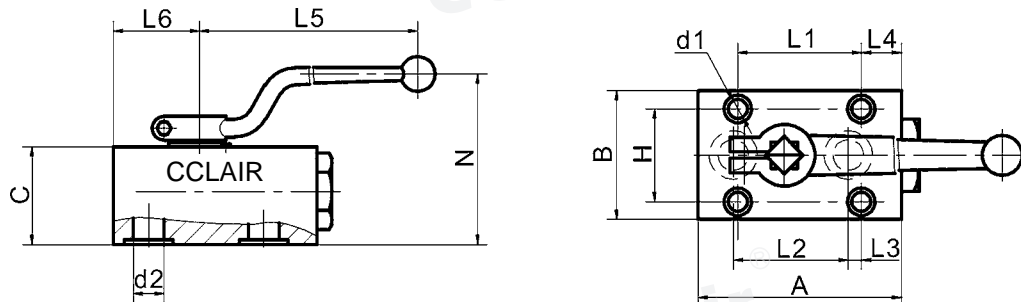
- 1、系列代号：QJ-球芯截止阀
Series Code: QJ-Globe Stop Valve
- 2、压力等级：H-315bar
Pressure Grade: H-315bar
- 3、公称通径：6、10、15、20、25、32、40、50mm
Nominal Diameter: 6,10,15,20,25,32,40,50mm
- 4、连接形式：B-板式、F-法兰式、NL-内螺纹连接、WL-外螺纹连接
Connection Type: B-Manifold mounting, F-Flange type, NL-Female thread join, WL-Male thread join

备注：适用介质/Applicable Medium: 液压油 Hydraulic Oil

图形符号 Symbol



外形尺寸 Overall Dimension

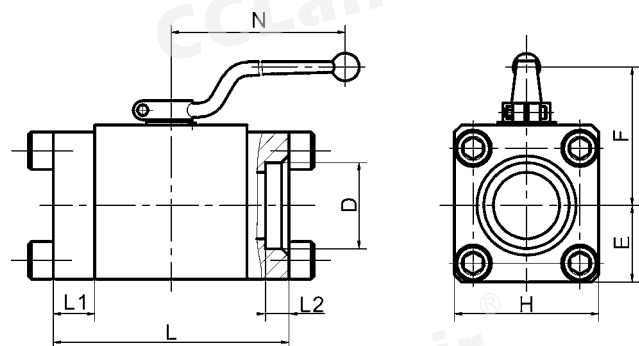


板式连接尺寸/ Manifold mounting dimensions

型号 Model	A	B	C	L1	L2	L3	L4	L5	L6	H	N	d1	d2
QJH-10B	80	54	42	60	45	11	12	105	33	38	62	φ 8.5	φ 9
QJH-15B	92	58	44	60	52	6	18	147	39	42	77	φ 8.5	φ 14
QJH-20B	108	70	52	70	60	8.5	21.5	185	45	50	90	φ 11	φ 18
QJH-25B	125	75	60	80	72	11	20	185	54.5	55	99	φ 11	φ 24
QJH-32B	152	98	71	120	90	19	16	240	69.5	75	111	φ 13	φ 30
QJH-40B	185	120	93	150	110	23	20	240	80	90	129	φ 17	φ 38

法兰式连接尺寸/ Flange connection dimensions

型号 Model	D	L	L1	L2	H	F	E	N
QJH-50F	φ 62	170	30	17	104	118	54	240
QJH-65F	φ 77	220	45	22	126	132	67	—
QJH-80F	φ 91	240	45	25	139	142	75	—



QJH系列高压球芯截止阀

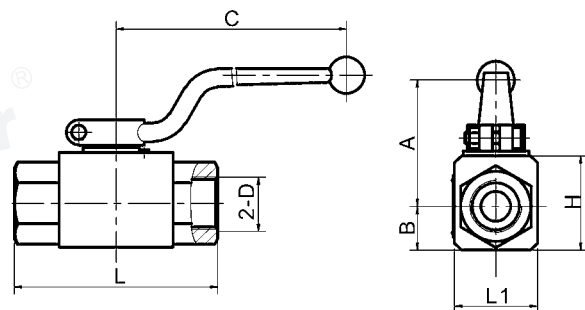
QJH Series High Pressure Ball Valve

其它
系列

外形尺寸 Overall Dimension

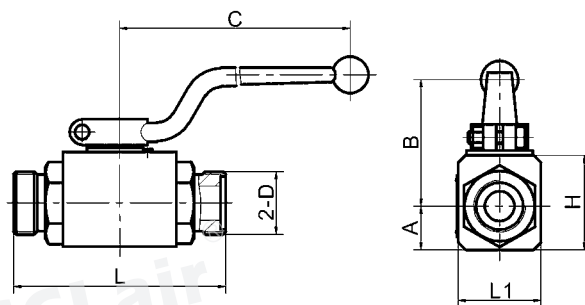
内螺纹连接尺寸/ Female thread join dimensions

型号 Model	A	B	C	L	L1	H	2-D
QJH-06NL	13.5	27	105	67	26	33	M16×1.5
QJH-10NL	16	40	105	76	32	36	M18×1.5
QJH-15NL	18.5	45	147	88	35	40	M27×2
QJH-20NL	25	46	185	100	48	55	M33×2
QJH-25NL	28.5	59	185	116	57	64	M42×2
QJH-32NL	37.5	74	240	130	75	84	M48×2
QJH-40NL	42.5	88	240	140	85	95	M60×2



外螺纹连接尺寸/ Male thread join dimensions

型号 Model	A	B	C	L	L1	H	2-D
QJH-06WL	13.5	27	105	71	26	33	M16×1.5
QJH-10WL	16	40	105	86	32	36	M22×1.5
QJH-15WL	18.5	45	147	96	35	40	M30×1.5
QJH-20WL	25	46	185	112	48	55	M36×2
QJH-25WL	28.5	59	185	122	57	64	M42×2
QJH-32WL	37.5	74	240	145	75	84	M52×2
QJH-40WL	42.5	88	240	163	85	95	M60×2



法兰式连接尺寸/ Flange connection dimensions

型号 Model	L	L1	H	H1	D	d1	d2	M
QJH-10F	103	105	44	36	φ 68	φ 22	φ 10	M10
QJH-15F	113	147	46	40	φ 75	φ 24	φ 15	M10
QJH-20F	117	185	48	42	φ 78	φ 30	φ 20	M10
QJH-25F	133	185	56	56	φ 100	φ 35	φ 23	M12
QJH-32F	145	240	63	62	φ 110	φ 45	φ 32	M12
QJH-40F	175	240	74	73	φ 130	φ 50	φ 38	M16

