

# KHP(PKH)系列板式高压球阀

KHP(PKH) 2-way Ball Valve For Manifold Mounting

其它  
系列

## 型号说明 Model Code

**KHP(PKH) -- 10 -- 1 1 1 2 -- 01 X**

1 2 3 4 5 6 7 8



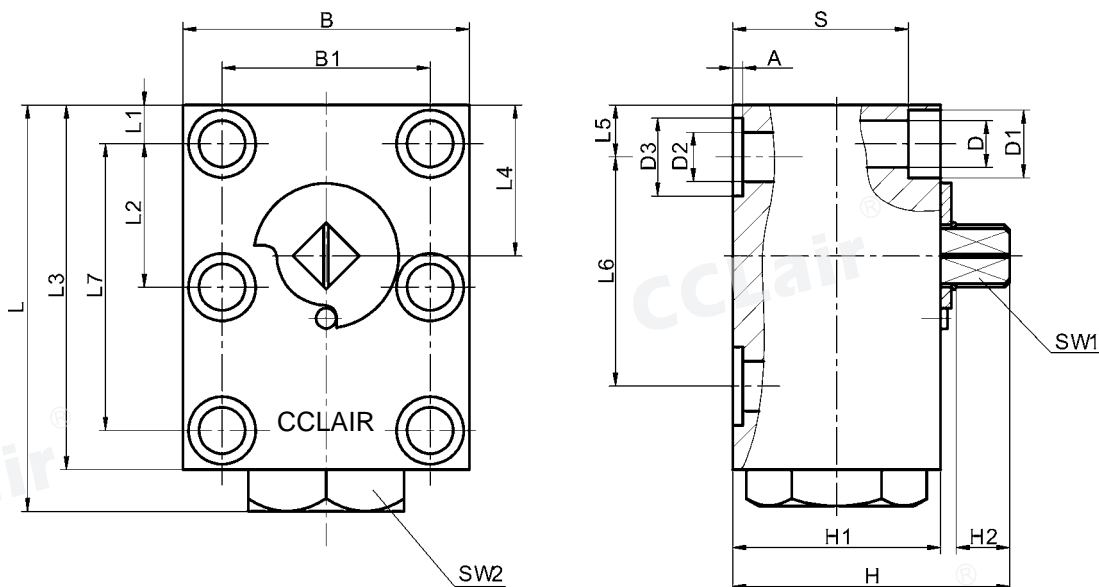
- 1、系列代号：KHP(PKH)系列板式球阀  
Series Code:KHP(PKH) 2-way Ball Valve For Manifold Mounting
- 2、公称口径：6、10、16、20、25、32、40、50mm  
Nominal Diameter:6,10,16,20,25,32,40,50 mm
- 3、阀体材料：1-钢  
Valve Body Material:1-Steel
- 4、球体材料：1-钢、2-黄铜  
Ball Body Material:1-Steel,2-Brass
- 5、工作温度：1. -25~+100 ℃、2. -30~+170 ℃  
Operating Temperature:1. -25~+100 ℃, 2. -30~+170 ℃
- 6、其他密封：2-丁晴橡胶、4-氟橡胶  
Other Airproof:2-NBR,4-FPM
- 7、手柄形式：02-铝质曲柄、04-铸铝曲柄、06-钢质曲柄、09-不带手柄  
Handle Type:02-Aluminium crooked handle,04-Casting zinc crooked handle,06-Steel crooked handle ,09-Without handle
- 8、设计序号：由生产商定  
Design Number:To be decided by the manufacturer

备注：适用介质/**Applicable Medium**: 液压油 Hydraulic Oil

## 图形符号 Symbol



## 外形尺寸 Overall Dimension



# KHP(PKH)系列板式高压球阀

KHP(PKH) 2-way Ball Valve For Manifold Mounting

其它  
系列

## 尺寸表 Dimension Sheet

简略型号 Part No.	PN (bar)	DN	LW	L	L1	L2	L3	L4	L5	L6	L7	B	B1
KHP-06	500	06	06	64	8.5	17.5	59	25	8.5	35	35	40	27
KHP-10	500	10	9.5	77	7.5	27.5	70	29	10	44	55	55	40
KHP-16	400	16	16	110	8.5	41.5	100	43	17	58	83	60	45
KHP-20	400	20	20	126	10	48.5	117	54	20	69	97	70	51
KHP-25	315	25	23.5	145	10	57.5	135	64.5	24	81	115	80	60
KHP-32	315	32	30	177	12	68	165	75.5	29	96	136	100	78
KHP-40	315	40	38	200	30	56	185	80	30	112	112	130	95
KHP-50	315	50	48	245	38	68	220	106	38	136	136	149	112

简略型号 Part No.	SW1	SW2	H	H1	H2	D	D1	D2	D3	A	S	O形圈/O-ring
KHP-06	09	22	37.5	30	7	6.6	11	6	11.7	1.6	23	8×2
KHP-10	09	30	54.3	40	10.5	9	13	9.5	15	2	31	10×2.6
KHP-16	09	41	66.3	52	10.5	9	13	16	25	2	43	20.29×2.62
KHP-20	12	41	76.3	60	10.3	10.5	16.5	20	30	2.5	50	23.39×3.53
KHP-25	12	46	81	65	10.8	10.5	17	23.5	35	2.5	55	28.17×3.53
KHP-32	14	55	96.5	80	10.8	13	19	30	40	2.5	67	32.92×3.53
KHP-40	14	65	117.5	93	12.8	17	25	38	48	3	77	42×3.5
KHP-50	14	/	129	110	12	22	33	48	55.4	2.9	88.5	49×3.5

简略型号 Part No.	内六角螺栓DIN912 Inner Hexagon Screw Thread	扭矩 Nm(摩擦系数μ=0.14时) Torque Nm(Rub Coefficient μ=0.14Time)
KHP-06	M6-10.9	13
KHP-10	M8-10.9	30
KHP-16	M8-12.9	35
KHP-20	M10-12.9	60
KHP-25	M10-12.9	60
KHP-32	M12-12.9	110
KHP-40	M16-12.9	300
KHP-50	M20-12.9	600